

## Masterials

Pin (outer sleeve):Brass,  
 Clip(contact finger):Beryllium copper,heat treated  
 Plating(outer sleeve):  
     Tin plated : 1.25u"m/50u"nickel,5um/200u"Tin  
     Gold plated:1.25u"m/50u"nickel,full gold  
 Plating clip(contact):1.25um/50 u"nickel,gold or tin plating  
 Insulator body(black):PPS polyester UL94V-0

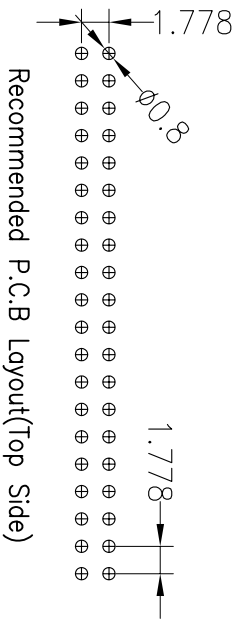
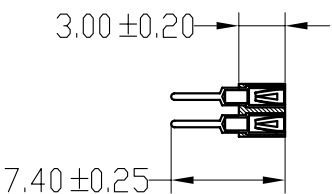
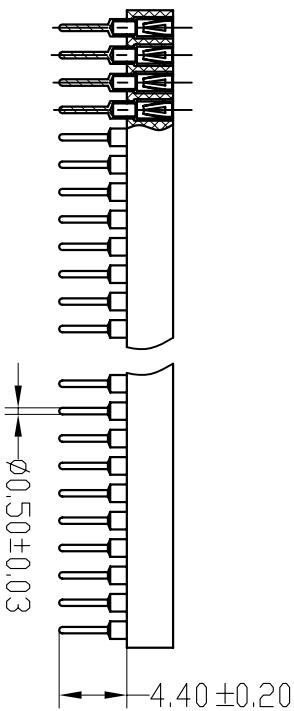
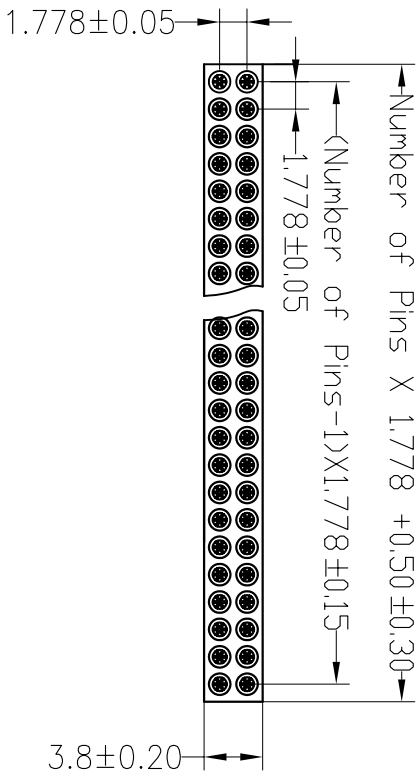
## Electrical

Current rating:3 Amps/contact max.  
 Contact resistance: max 20mΩ  
 Dielectric resistance:Min 500MΩ

## Ordering Information

3623 30 2 XX S XX 074 01

Insulator Type Code	No. of Pins	Contact Plating	Pin Length
2: Dual row	2x40Pins	SN: Tin GO: Gold Flash G2: 2U"Gold G3: 3.0U"Gold G4: 5U"Gold G5: 10U"Gold S0: Gold Flash/Tin Standard: 50	074=7.4mm



OPERATION		DRAW		SCALE		FIT		PART NO.	
X.X	±0.30	YUSheng	15.01.08	UNIT	mm	A4	1/1	3623302XXSXX07401	
X.XX	±0.20	CHECK		SIZE					
X.XXX	±0.10			SHEET					
Angle	±3°	APPROVE		PROJ.					
DIM	TOL								
MODIFICATION DESCRIPTION		CHANGE		TITLE:		1.778x3.0 Machine Female Header Dual row 180° L=7.4mm			
REV	DATE								
A0	2015.01.08	NEW DRAWING							
A		B		C		D		E	

**JIN** 深圳市锦凌电子有限公司  
 SHENZHEN JINLING ELECTRONIC CO.,LTD  
 Tel: 86-755-2997-5806/5802 Fax: 86-755-2997-5992